

 GAPOSA

AUTONOMO

solar powered motors



**sunlight energy
to powering
sun protection
motors**



a virtuous
circle
in motorized
window
coverings

Features

- Eco-sustainable motorized system
- Safe, long life, charger-free battery technology
- Wireless power and control cables
- Plug and play full package: motor, battery and solar panel, all pre-wired for quick connections

A green alternative solution with a lot of benefits:

- No wiring to electrical power line
- Saving in energy costs
- Easy assembly
- Quick installation

Solar energy technology has greatly evolved during the last few years and it is clearly part of our everyday lives today.

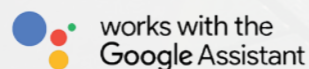
Gaposa has designed a completely autonomous motor with a specific algorithm for power management of the energy captured by the solar panel and stored in the battery.

The Gaposa R&D team has tuned the best combination of battery capacity and solar panel peak power for an efficient and long lasting solution.



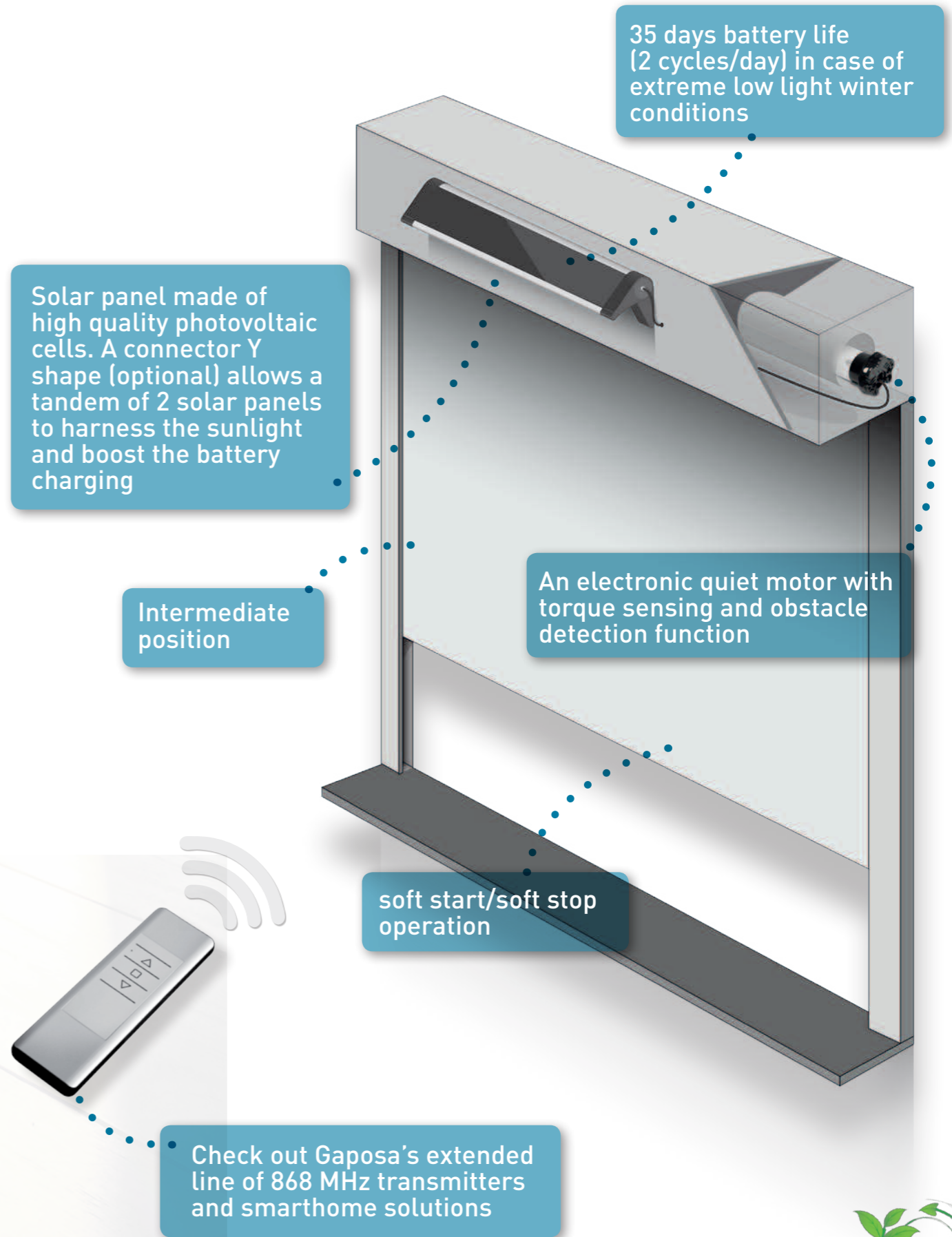
roll.app

Full integration with GAPOSA smarthome solutions



Quick and easy installation

No need to hire electricians, painters or move furniture around.

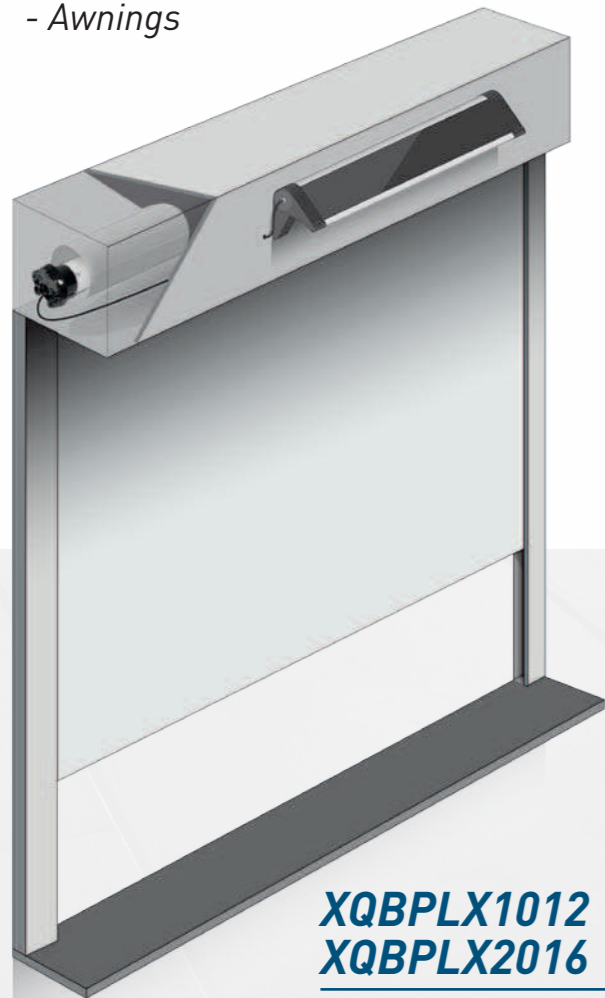


PACKAGES

• Outside installation

Waterproof connectors on exterior rated cables + solar panel with integrated battery in a shaped alu profile.

Typical in exterior solar protection:
- Zip screens
- Awnings



XQBPLX1012 **XQBPLX2016**

- List of parts:
- XQBPLX motor
 - SPB18 Solar panel and battery

• Inside the box installation

Naked battery + thin solar panel, standard connectors in no rated cables.

Typical in roller shutters



XQBPX1012 **XQBPX2016**

- List of parts:
- XQBPX motor
 - BNH22 battery pack
 - SPM18 Solar panel
 - battery holding clips

TECHNICAL DATA

| Motor | XQDC4SX1012 |
|---------------------|-----------------|
| Torque | 10 Nm |
| Speed | 12 rpm |
| Power | 36 W |
| Amps | 3.0 A |
| Max turns | 160 |
| Power Supply | 12 V |
| Working temperature | -10° C / +40° C |
| Duty rating | 6 min |
| Radio frequency | 868.30 MHz |
| Protection | IP44 |

| Motor | XQDC5SX2016 |
|---------------------|-----------------|
| Torque | 20 Nm |
| Speed | 16 rpm |
| Power | 72 W |
| Amps | 6.0 A |
| Max turns | 80 |
| Power Supply | 12 V |
| Working temperature | -10° C / +40° C |
| Duty rating | 6 min |
| Radio frequency | 868.30 MHz |
| Protection | IP44 |

Battery pack BNH22

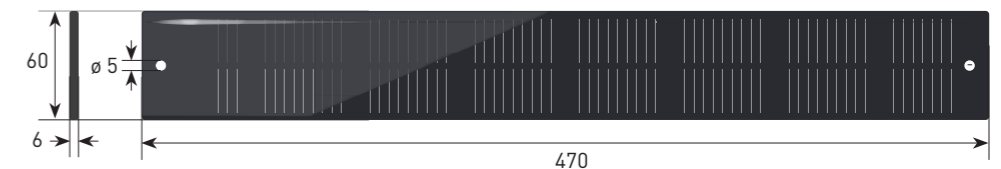
| | |
|-------------------|-----------------|
| Voltage | 12V / Ni-MH |
| Capacity | 2200 mAh |
| Max working range | -20° C / +70° C |



Solar panel SPM18

Photovoltaic monocrystalline panel

| | |
|-------------------|--------|
| Max power current | 200 mA |
| Max power Voltage | 18 V |
| Maximum power | 3.6 W |
| Protection | IP X4 |



Solar panel and battery pack SPB18

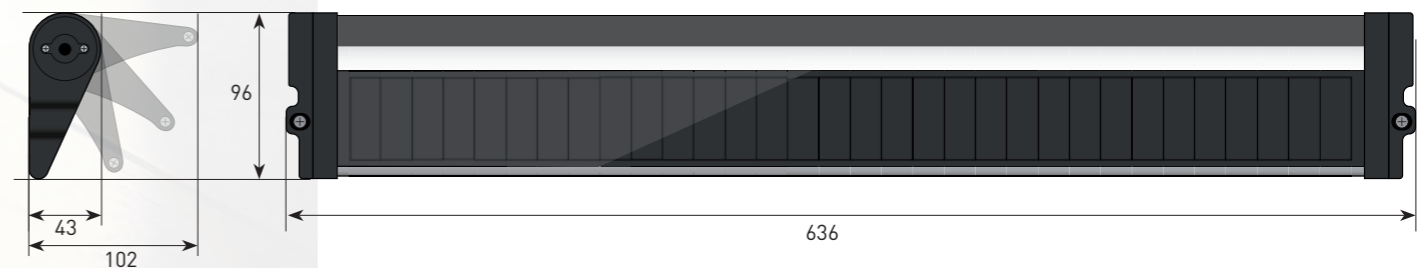
Photovoltaic monocrystalline panel + battery pack in a waterproof alu profile

Solar panel

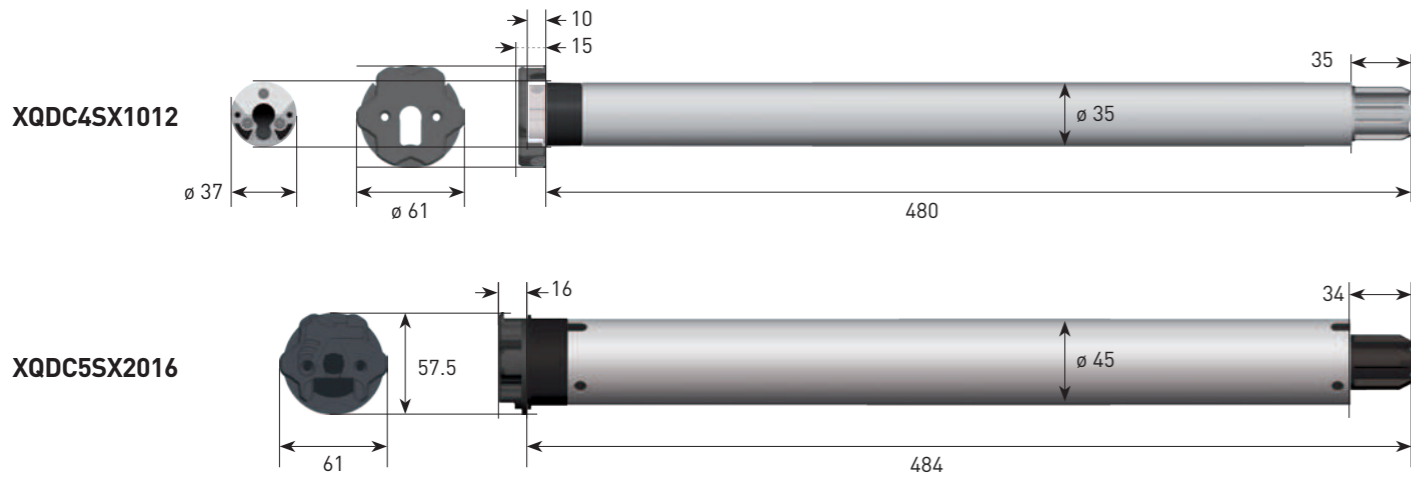
| | |
|-------------------|--------|
| Max power current | 305 mA |
| Max power Voltage | 18 V |
| Maximum power | 5.5 W |
| Protection | IP55 |

Battery

| | |
|-------------------|-----------------|
| Voltage | 12V / Ni-MH |
| Capacity | 2200 mAh |
| Max working range | -20° C / +70° C |

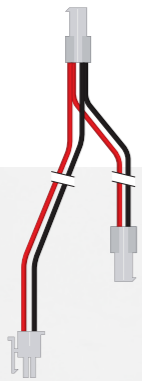


MOTOR DIMENSIONS



ACCESSORIES

FLAXTWCC
 Twin-connection Y
 cable to upgrade a
 solar assembly with an
 additional solar panel



Extension cord with
 waterproof connectors



BC15NH
 Battery charger
 Sometime required by end
 users in high latitude regions
 instead of a second solar
 panel



Connection cable
 to adapt the battery
 charger to the Solar
 panel and battery
 pack SPB18





GAPOSA srl
via Ete, 90 - 63900 Fermo - Italy
Tel. +39.0734.220701
info@gaposa.com
www.gaposa.com

